

# C. Advanced Operations

## C4. Other convenient usage

### < ICON GUIDE >

Some of function in Mold EX-Press limits CAD software.  
Please refer to the ICONs shown in the bottom each page.

 — AutoCad

 — NX

 — Pro/ENGINEER

 — CATIA

 — SolidWorks

 — PTC Creo

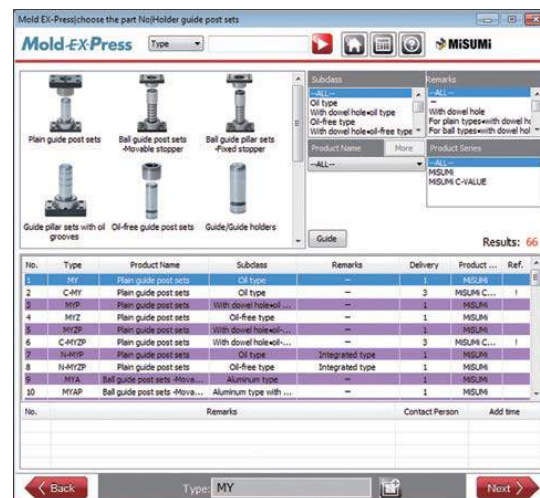
## C4-1. Affirming the paper catalog content

Complete information of all paper catalogs is implemented in Mold EX-Press. You don't have to leave your desk to pick up the paper catalog away in the shelf.

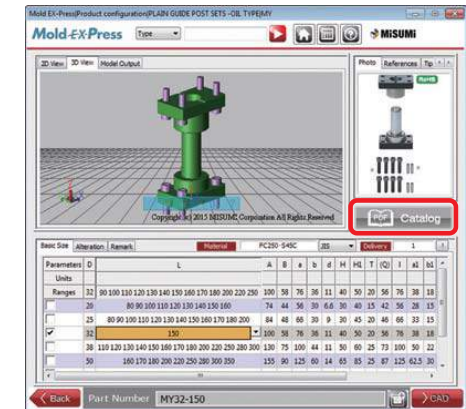
1 Display Home. (First page)



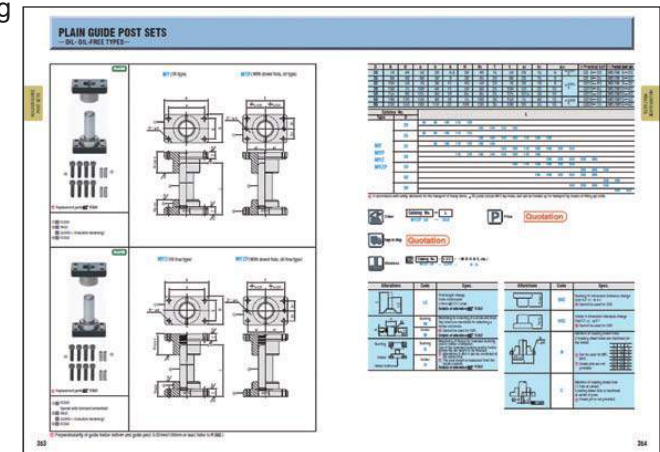
2 Select the products to go to the third page, Product Configuration.



3 Click the [PDF] button in the third page.



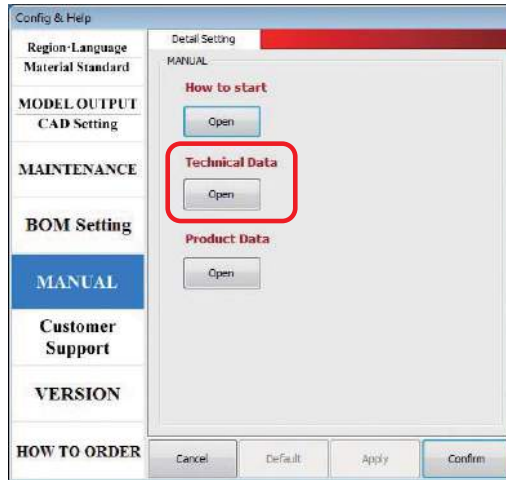
4 The paper catalog in PDF formats corresponding to the selected products is displayed.



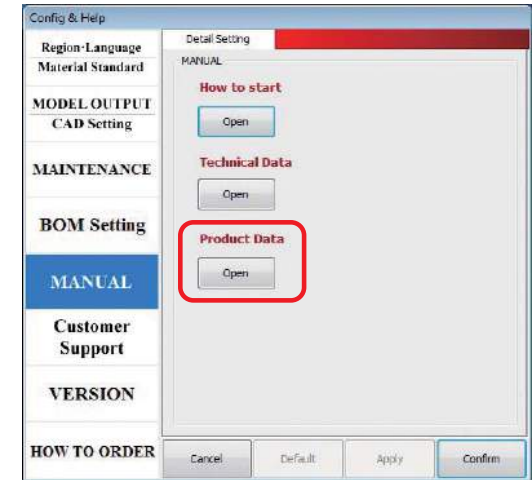
## C4-2. Viewing Technical Data and Product Data

Technical Data and Product Data in the paper catalog are implemented in Mold EX-Press in PDF format.

- 1** Go to [Help] and open [MANUAL]. Click [Open] button for Technical Data.



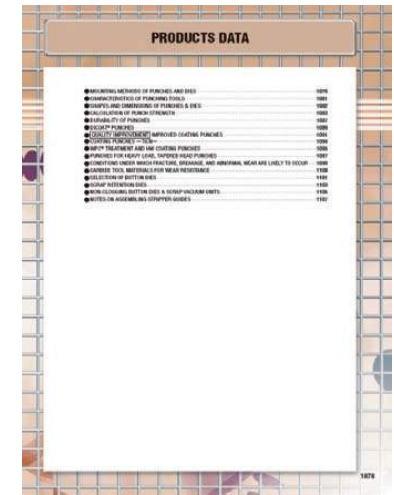
- 3** Go to [Help] and open [MANUAL]. Click [Open] button for Product Data.



- 2** Technical Data in PDF format opens.



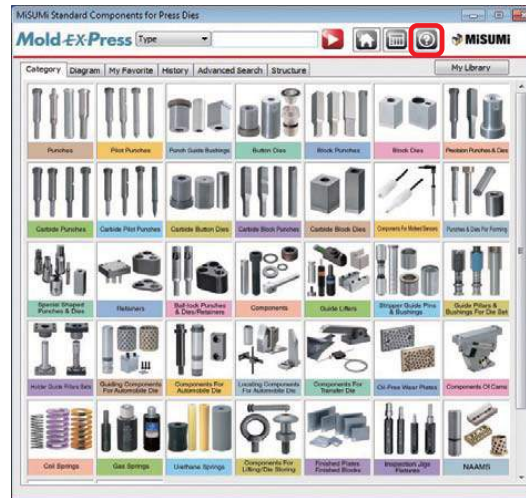
- 4** Product Data in PDF format opens.



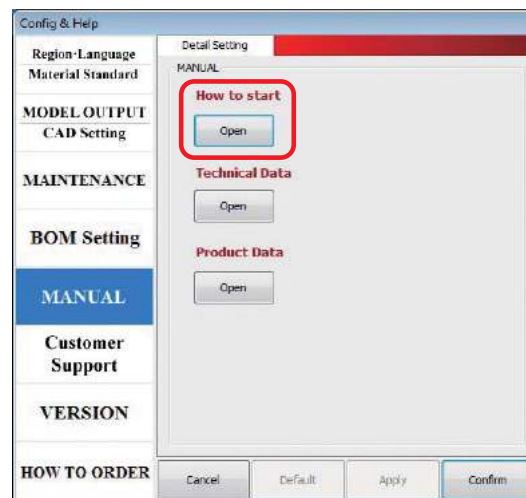
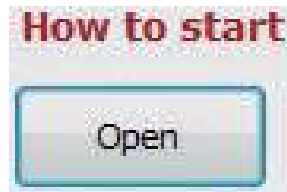
## C4-3. Obtaining the instruction manual, Master Book

To use Mold EX-Press more conveniently Masterbook will give you significant tips.

- 1 Click the [Help] button in the Home (First page).



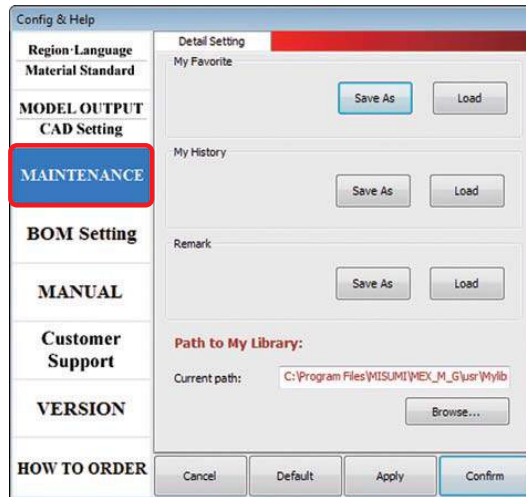
- 2 Click [Open] button to open the Master Book.



## C4-4. Shortcut to your own CAD Library

You may sometimes wish to open your own CAD library during design work. Use My Library to reach promptly.

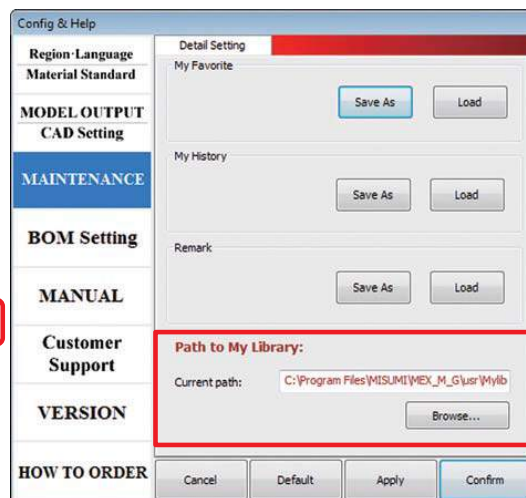
- 1** Open [MAINTENANCE] in the [Help] page.



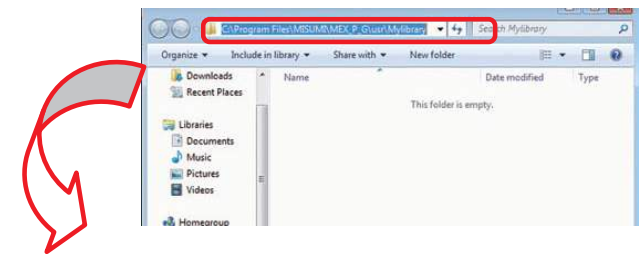
- 3** Click the [My Library] button in the main interface (First page).



- 2** Click [Browse for Folder] in Path to My Library in order to specify the shortcut location.



- 4** The folder you set opens.





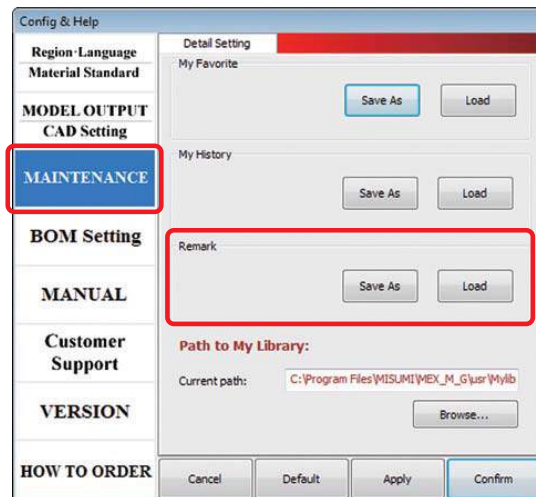
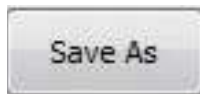
## C4-5. Sharing the remarks function

Remarks added to the products can be shared with others. For example, new designers can share the note information added by the experienced designers.

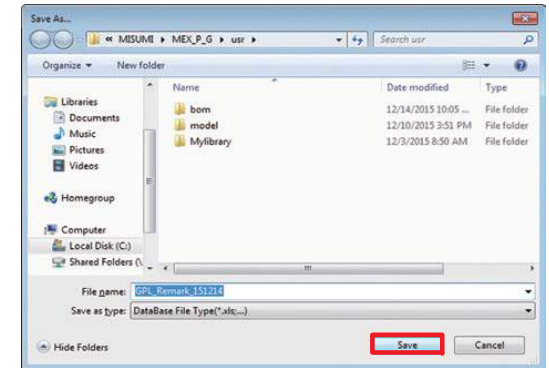
- 1 Click the [Help] button in the Home (First page).



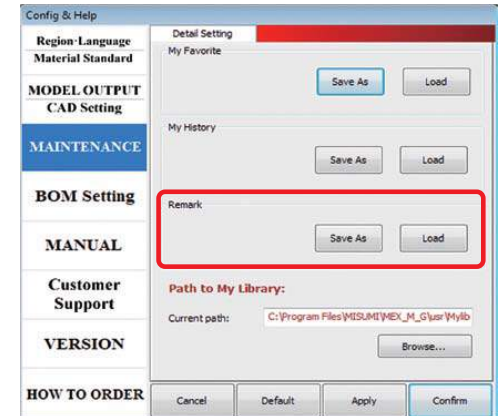
- 2 Open [MAINTENANCE] and click the [Save as] button in the Remark item.



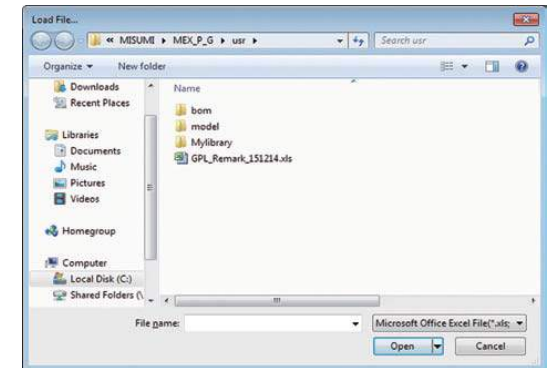
- 3 Fill in the file name and save. Pass the saved file to a sharer to import.



- 4 To import the remarks converted to Excel file click the [Load] button.



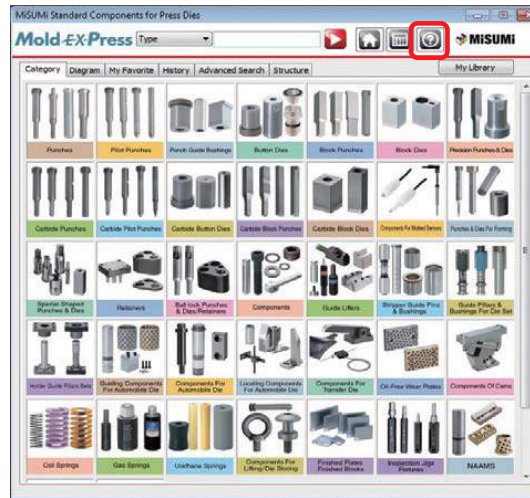
- 5 Select the file to import and the remarks are added.



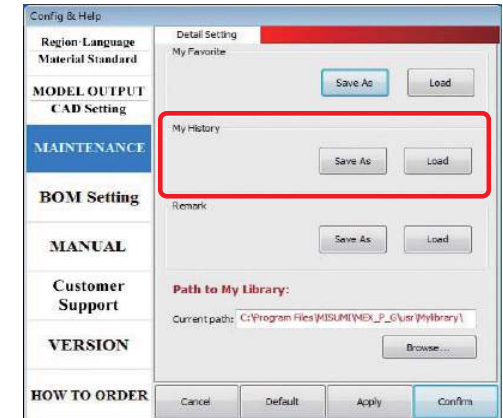
## C4-6. Sharing the History information with other designers

The part records you selected in the past are accumulated in History. They can be exported in Excel data format so that another user can import the data to his own Mold EX-Press, therefore product information in History can be easily shared.

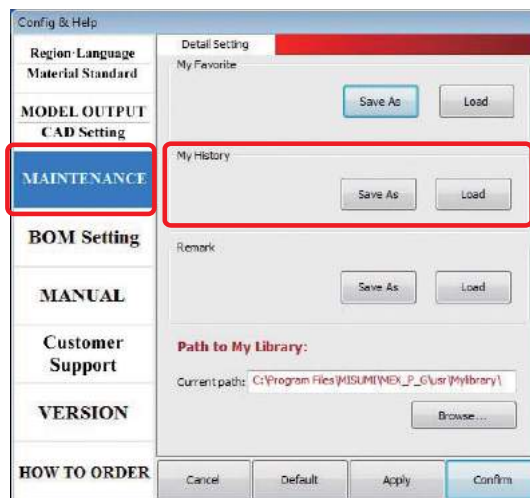
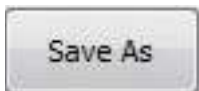
- 1** Click the [Help] button in the Home (First page).



- 3** To import, select MAINTENANCE and then select [Load] in [History]



- 2** Open [MAINTENANCE] and click the [Save as] button in the History item.



- 4** Select the tables you want to import.

